

OUCO

Organized Teamwork

团队协作

Unique Quality

质量一流

Competitive Price

价格优势

Outstanding Service

服务至上

经销商：

欧超（无锡）注塑机械设备有限公司

OUCO (WUXI) INJECTION MOLDING MACHINERY CO.,LTD

地址：江苏省无锡惠山区阳山镇陆区天顺路20号

电话：150-6188-7127

座机：0510-82737166

邮箱：sales@ouco-tech.com

网址：www.ouco-tech.com

OUCO 欧超塑机

塑机定制新时代



G系列注塑机

INJECTION MOULDING MACHINE



欧超（无锡）注塑机械设备有限公司

OUCO (WUXI) INJECTION MOLDING MACHINERY CO.,LTD

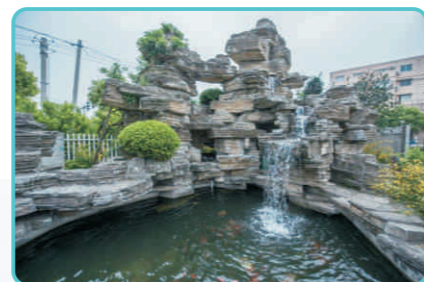
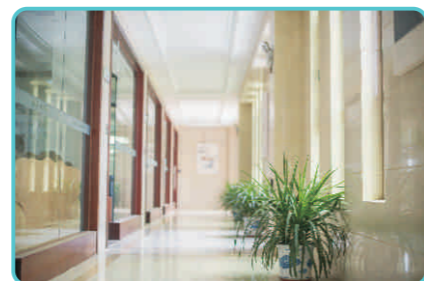
走进欧超

About OUCO

江苏欧超重工科技集团成立于1984年2月。公司坐落于景色秀丽的太湖之滨、灵山脚下，是无锡市惠山区阳山工业园的高新技术企业。2021年集团全资成立欧超（无锡）注塑机械设备有限公司。公司占地面积3.5万平方米，工厂面积2.5万平方米。公司致力于为汽车配件、医疗器材、大型管件、垃圾桶、托盘果篮等市场领域研发制造高品质、高性能注塑设备，为客户定制高效、节能、专业的生产解决方案。

欧超以欧洲标准打造全新G系列产品，SV伺服节能系统，合模力从110吨至600吨共8种规格，每种规格也可根据客户产品要求选配2种或3种不同的注射结构。

矢志不渝，追求完美。欧超始终致力于满足客户的需要，为客户创造更大的价值是欧超注塑永恒的理念。我们将一如既往走在市场前端，无惧艰辛与挑战，在机器节能化、自动化、精密化、人性化等方面不断努力，给客户带来最大的投资回报。



Jiangsu OUCO Heavy Industry Technology Group was founded in February 1984. The company is located in the beautiful Taihu Lake, the foot of Lingshan Mountain, is a high-tech enterprise in Wuxi Huishan District Yangshan Industrial Park. In 2021, the Group invested to establish OUCO (Wuxi) injection molding machinery equipment Co., Ltd. The company covers an area of 35,000 square meters, and the factory covers 25,000 square meters. The company is committed to developing and manufacturing high-quality and high-performance injection molding equipment for automotive parts, medical equipment, large pipe fittings, garbage cans, trays, fruit baskets and other market fields, and customizing efficient, energy-saving and professional production solutions for customers.

OUCO creates a new G-Series product with European standards. SV servo energy-saving system has 8 specifications with clamping force ranging from 110 tons to 600 tons. Each specification can also be selected with 2 or 3 different injection structures according to customer product requirements.

The passionate pursuit of perfection. OUCO has always been committed to meet the needs of customers, create more value for customers is the super injection eternal ideas. we will, as always in the market front, fear hardships and challenges, in energy conservation, automation, machine motors, humanization aspects of continuous efforts, bring customers the greatest return on investment.

欧超智能装备简介

Introduction of OUCO

欧超塑机拥有大型龙门五面体加工中心。生产操作认真精细，每一道工序都有科学严谨的规范和流程，保证产品的装配的精度和可靠性。引进国际先进的加工设备和检测设备，严格的质量控制，检测程序，确保出厂的每一台设备达到完美质量。



大型龙门式五面体加工中心



数控双龙门移动式镗铣床XKA2730×26000



齐齐哈尔二机落地镗铣床TKA6920



数控落地镗铣床TX6916

新款G系列 New G series

GB标准系列

GF快速系列

GH电液混合动力系列

GK高速薄壁专用机系列

GB Standard Series

GF High Speed Series

GH Hybrid Series

GK High Speed Thin-wall Series



节能 精度高 高效

环保 射速快 便捷

可靠 性能好 安全

全球领先的控制系统，满足您高精度的生产需求

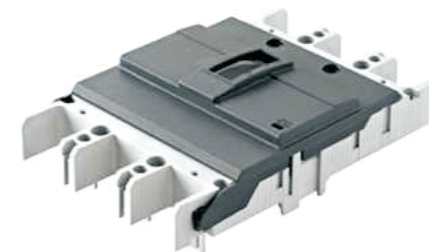
- 使用竖屏，与传统屏幕截然不同，使更多数据可以同时显示在主界面
- 有6种语言可以供客户选择，且适合进行出口销售
- 工艺整体流程图形化，可实现根据自行工艺的不同而进行自由配置
- 具有USB2.0接口，支持连接以太网、打印机等设备
- 有8时段加热PID控制功能，将料筒分段控制加热，提高原料充分塑化能力
- 48点数字量晶体管输出端具有短路、过载保护功能
- 锁模、注射、顶针行程均采用直线位移传感器监控动作精度
- 自动根据模具的不同而进行锁模力调整
- 可设置一周内自动加热时间，提高生产效率
- 开/合模、注射均使用5级分段控制动作，有效提高动作稳定性

采用主要电气配置

- 韩国LS品牌的三相断路器/单极断路器/三极断路器
- 台湾FOTEK品牌的固态继电器/快速熔断器
- 法国Schneider, gefran品牌的接触器/热继电器/行程开关
- 意大利Gefran品牌的直线位移传感器
- 韩国Autonics品牌的接近开关/光电传感器
- 台湾MW品牌的开关电源



- Vertical screen can display more data in the main screen simultaneously, different from traditional display
- Choice of six languages
- Graphic display of process and be freely adjusted to suit different processing needs
- USB 2.0 interface support for the Ethernet connections, printer and other equipment
- Eight section of PID control functions, heating each section of the barrel separately, improve plasticisation and prevent overheating
- Output of the 48 point digital transistor with shot circuit and over load protects function
- Clamping, injection and ejection strokes are controlled precisely by the linear transducers
- Automatic mould thickness adjustment
- Heating time can be set a week in advance to improve production efficiency
- Five stages control on mould opening, closing and injection makes the operation more stable and precise



The main electrical configurations:

- Korea LS Three-phase circuit breaker\single-pole circuit breaker\Three-pole circuit breaker adopt
- Taiwan FOTEK Solid relays\fast fuse breaker therom rolay
- French Schineider gefran Contactor\ihermo-relay\stroke switch
- Italy Gefran Linear transducer
- Korea Autonics Proximity switch\photosensor
- Taiwan MW Switching power

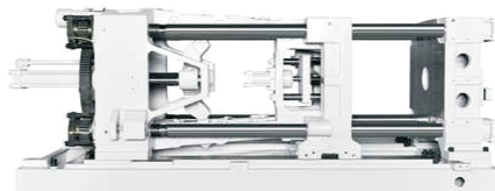
新款G系列高速高压注塑机

合模部分和机架优势：采用有限元分析方法设计的高强度模板、有效的防止模板变形、断裂、优化设计的机绞。

Advantage of the improved clamping unit and machine structure: Platen design by finite element analysis to eliminate deformation and fracture and optimise toggle locking system.

机架所用钢板和方通加厚
机绞、钢司和钹边、模板加厚
哥林柱采用高钢性材料
开模和顶出行程大，顶出压力大
动模板采用油脂干油润滑

Reinforced steel plate and square tube for machine frame
Strengthened toggle, bushing and platen
Tie bars are manufactured from high grade steel
Longer mould opening and ejector stroke and stronger ejection force
Moving platen using lubrication free bushing



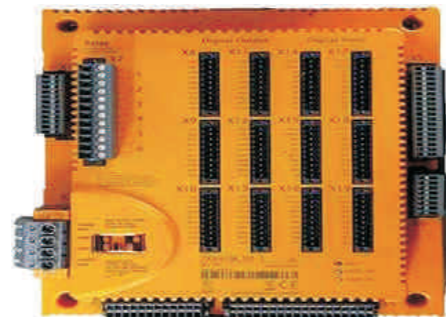
射台部分优势：采用双射移油缸结构、确保射嘴对中性能、密封可靠、不漏胶、单缸整体注射，双线性导轨射移结构。精度高、摩擦系数低，注塑和塑化过程阻力小且均匀一致，调节灵敏、单缸注塑结构、大幅度减少射胶时运动惯量，提高了注塑速度和塑化能力。

Advantage of the injection unit: The double cylinder structure on the injection unit can ensure centering performance of the nozzle and seal better between mould and nozzle, so no plastic leaks. Higher injection accuracy, low coefficient friction and more uniform during injection and plasticising process; easy to adjust and greatly reduce movement inertia during injection, hence improve injection speed and plasticising capacity.



电器部分优势：采用原装奥地利高响应smartmold贝加莱电脑、CPU和DSP高速模块及增加模拟量输出模块、底板模块、总线模块等控制精度高、响应速度快。

Advantage of computer control unit: Our European computer control unit has high speed CPU and DSP module and it increases high control to analogue output module, back plane module, bus module etc. and has fast response.



Introduction of New G-series High-speed High-pressure Injection Moulding Machine

塑化部分优势：采用优质材料机筒螺杆、熔胶快、缩短熔胶时间。

射嘴与前体法兰连接定位设计为内置定位、效果更加好、不易漏胶、高压、高速不会轻易造成前体开裂现象。

Advantage of plasticising unit: Adopt high quality material barrel screw, plastic melting is fast, so reduces melting time. Injection nozzle and front flange connection design is inside position, result in better connection, hard to leak and can withstand high pressure and high speed injection.



钣金挡门部分优势：钣金挡门部分采用全封闭式锁模挡门，有效的阻止异物进入锁模装置、更美观、更安全，机械安全门采用刹车线制动装置、性能安全可靠、灵活方便。

Advantage of enclosed slide door: The fully enclosed slide door could effectively prevent foreign matter entre the clamping unit, and is beautiful and more secure. Mechanical safety door use brakes device or brake line, it is safe and reliable, flexible and convenient.



液压系统部分优势：独特液压油路设计采用插装阀板，响应时间快，压力和速度控制精确、成型精度高。

Advantage of the hydraulic unit: Unique hydraulic circuit design using cartridge valve plate. It has fast response time, pressure and speed control is precise, so higher product precision and repeatability.

G系列机器选型指南 Model selection instruction of G series machine

CWI-220G/860I-SV

- SV: 高速伺服 (High Speed Servo Pump)
- 机器的射台 (注射量的选择)
Injection Unit of machine (selection of injection weight)
- 机器的吨位 (锁模力的选择)
Size of machine (selection of clamping force)



CWI-110GB

CWI-150GB

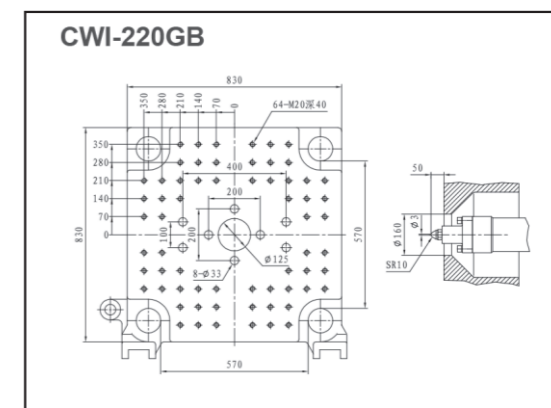
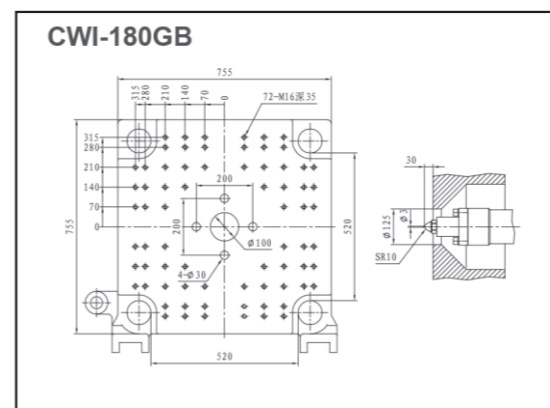
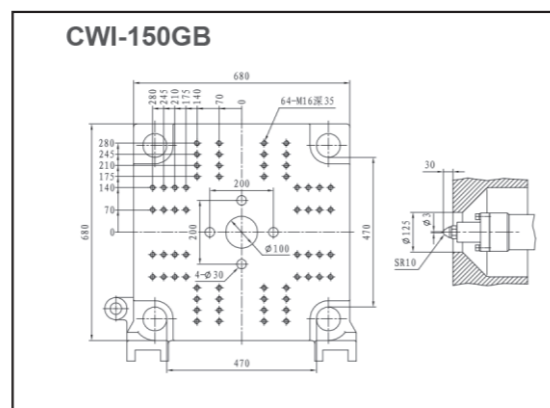
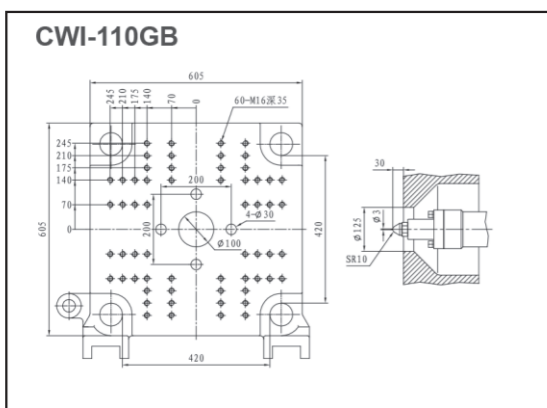
机型		CWI-110GB				CWI-150GB						
合模装置	锁模力	Kn	Clamping Force		1100		1500					
	拉杆间距	mm	Space Between Tie-bars		420×420		470×470					
	开模最大开距	mm	Clamping Stroke		400		450					
	最大模厚	mm	Mould Thickness Max		450		520					
	最小模厚	mm	Mould Thickness Min		150		170					
	模板尺寸	mm	Size of Platen		605×605		680×680					
	顶出长度	mm	Ejector Stroke		110		140					
	顶出力	Kn	Ejector Force		38		53					
			Ejector Quantily		5		5					
			310D		420D		420D		650D			
注射装置	螺杆直径	mm	Screw Diameter	28	32	35	35	40	35	40	40	45
	螺杆长径比		Screw L/D ratio	23.4	23	21	24	21	24	21	23.6	21
	理论射胶容积	cm ³	Shot Size	89	117	140	163	214	163	214	251	318
	注射重量	(PS) g	Shot Weight	81	108	129	150	196	150	196	231	292
	注塑压力	Mpa	Injection Pressure	306	234	204	256	196	256	196	240	190
	注射速度	mm/s	Injection Speed	129		101		126		100		
	注塑速率	cm ³ /s	Injection Rate	76	99	119	93	121	116	151	138	175
	螺杆最大转速	rpm	Screw Speed	330		250		300		220		
其他	油泵电机功率	Kw	Motor Power		16		20					
	油泵排量	L/min	88		110							
	电热功率	Kw	Heater Power		7.11		8.91		8.91		10.9	
	机器净重	ton	Machine Weight		4.2		5.2					
	机器尺寸(长×宽×高)	mm	Machine Dimension		4255×1430×1690		5095×1500×1745					



CWI-180GB

CWI-220GB

机型		CWI-180GB				CWI-220GB						
合模装置	锁模力	Kn	Clamping Force		1800		2200					
	拉杆间距	mm	Space Between Tie-bars		520×520		570×570					
	开模最大开距	mm	Clamping Stroke		500		550					
	最大模厚	mm	Mould Thickness Max		550		600					
	最小模厚	mm	Mould Thickness Min		200		220					
	模板尺寸	mm	Size of Platen		755×755		830×830					
	顶出长度	mm	Ejector Stroke		140		170					
	顶出力	Kn	Ejector Force		53		80					
			Ejector Quantily		5		9					
			650D		860D		860D		1100D			
注射装置	螺杆直径	mm	Screw Diameter	40	45	45	50	45	50	50	55	
	螺杆长径比		Screw L/D ratio	23.6	21	23.3	21	23.3	21	23.1	21	
	理论射胶容积	cm ³	Shot Size	251	318	357	441	358	442	487	589	
	注射重量	(PS) g	Shot Weight	231	292	328	406	329	406	448	542	
	注塑压力	Mpa	Injection Pressure	256	202	232	188	256	207	225	186	
	注射速度	mm/s	Injection Speed	121		99		126		101		
	注塑速率	cm ³ /s	Injection Rate	152	192	157	194	200	247	198	240	
	螺杆最大转速	rpm	Screw Speed	300		195		245		185		
其他	油泵电机功率	Kw	Motor Power		24		34					
	油泵排量	L/min	138		176							
	电热功率	Kw	Heater Power		10.9		13.3		13.3		15.9	
	机器净重	ton	Machine Weight		6.5		7.5					
	机器尺寸(长×宽×高)	mm	Machine Dimension		5455×1620×1820		5830×1640×1870					





CWI-280GB

CWI-350GB

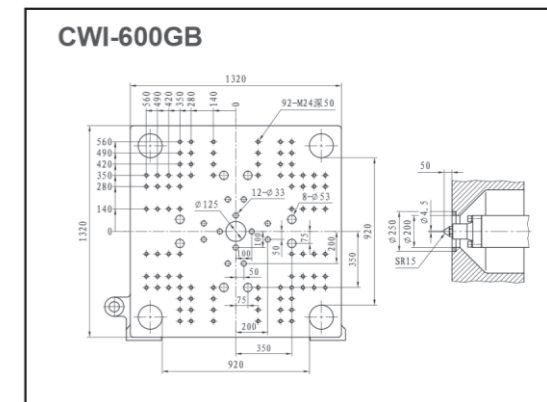
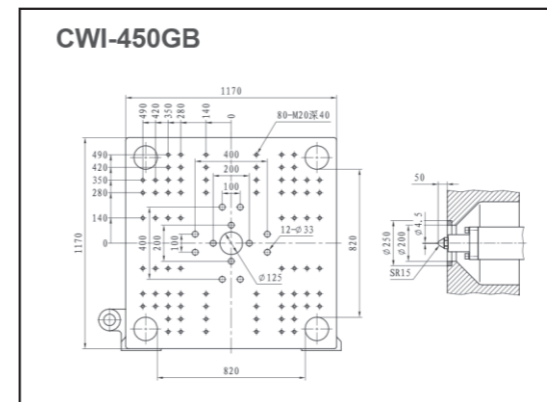
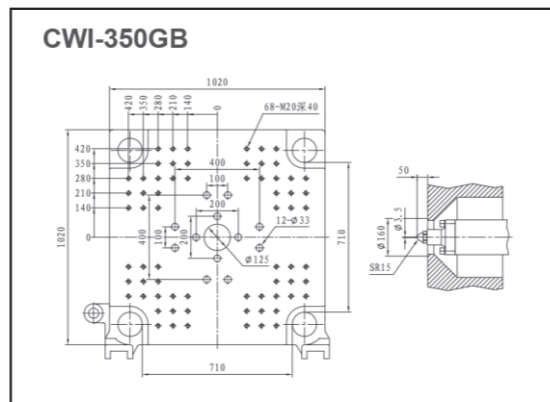
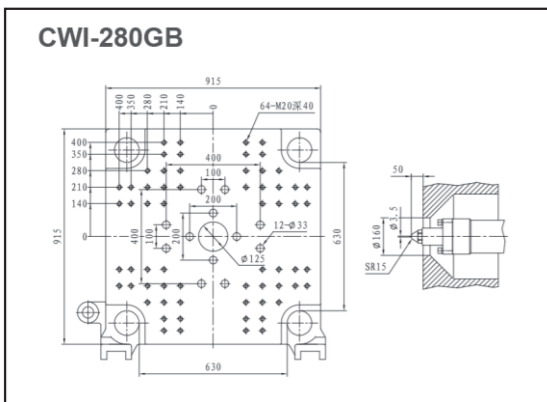
机型		CWI-280GB						CWI-350GB								
合模装置	锁模力	Kn	Clamping Force		2800			3500								
	拉杆间距	mm	Space Between Tie-bars		630×630			710×710								
	开模最大开距	mm	Clamping Stroke		600			680								
	最大模厚	mm	Mould Thickness Max		650			720								
	最小模厚	mm	Mould Thickness Min		240			260								
	模板尺寸	mm	Size of Platen		915×915			1020×1020								
	顶出长度	mm	Ejector Stroke		170			200								
	顶出力	Kn	Ejector Force		80			80								
	顶针数		Ejector Quantily		13			13								
				1100D		1700D		1700D		2800D						
注射装置	螺杆直径	mm	Screw Diameter		50	55	60	55	70	60	65	70	70	75	80	
	螺杆长径比		Screw L/D ratio		23.3	21	23.1	21	19.5	22.8	21	19.5	22.3	21	19.8	
	理论射胶容积	cm ³	Shot Size		487	589	820	962	1115	820	962	1115	1385	1590	1809	
	注射重量	(PS) g	Shot Weight		448	542	754	885	1026	754	885	1026	1274	1462	1664	
	注塑压力	Mpa	Injection Pressure		231	191	215	183	158	215	183	158	204	178	156	
	注射速度	mm/s	Injection Speed		128		95		121		95					
	注塑速率	cm ³ /s	Injection Rate		251	304	268	315	365	341	400	464	365	419	477	
	螺杆最大转速	rpm	Screw Speed		220		180		200		160					
其他	油泵电机功率	Kw	Motor Power		36			48								
	油泵排量	L/min			220			275								
	电热功率	Kw	Heater Power		15.9		22.4		22.4		30.2					
	机器净重	ton	Machine Weight		11.8			13								
	机器尺寸(长×宽×高)	mm	Machine Dimension		6375×1650×2250			6750×1920×2350								



CWI-450GB

CWI-600GB

机型		CWI-450GB						CWI-600GB								
合模装置	锁模力	Kn	Clamping Force		4500			6000								
	拉杆间距	mm	Space Between Tie-bars		820×820			920×920								
	开模最大开距	mm	Clamping Stroke		790			900								
	最大模厚	mm	Mould Thickness Max		800			900								
	最小模厚	mm	Mould Thickness Min		300			350								
	模板尺寸	mm	Size of Platen		1170×1170			1320×1320								
	顶出长度	mm	Ejector Stroke		220			250								
	顶出力	Kn	Ejector Force		113			151								
	顶针数		Ejector Quantily		13			21								
				2800D		4000D		4000D		6600D						
注射装置	螺杆直径	mm	Screw Diameter		70	75	80	80	85	90	80	85	90	90	100	110
	螺杆长径比		Screw L/D ratio		22.8	21	19.7	22.3	21	19.8	22.3	21	19.8	22.9	21	19.4
	理论射胶容积	cm ³	Shot Size		1385	1590	1809	2060	2325	2607	2060	2325	2607	3052	3768	4559
	注射重量	(PS) g	Shot Weight		1274	1462	1664	1873	2115	2371	1895	2139	2398	2808	3467	4195
	注塑压力	Mpa	Injection Pressure		204	178	156	204	180	161	204	180	161	215	176	144
	注射速度	mm/s	Injection Speed		135		107		119		90					
	注塑速率	cm ³ /s	Injection Rate		517	596	676	539	608	682	583	660	739	620	765	926
	螺杆最大转速	rpm	Screw Speed		240		160		180		150					
其他	油泵电机功率	Kw	Motor Power		36+34			36+36								
	油泵排量	L/min			396			400								
	电热功率	Kw	Heater Power		30.2		43.9		43.9		46.9					
	机器净重	ton	Machine Weight		20			32								
	机器尺寸(长×宽×高)	mm	Machine Dimension		7960×2100×2460			10000×2320×2470								





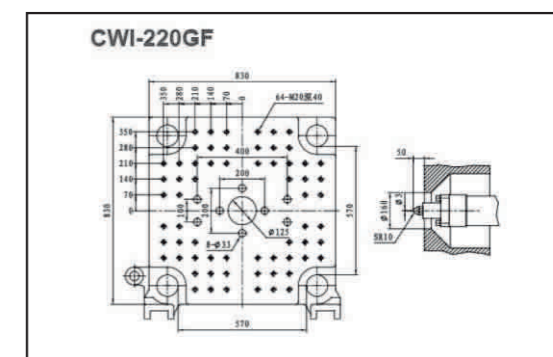
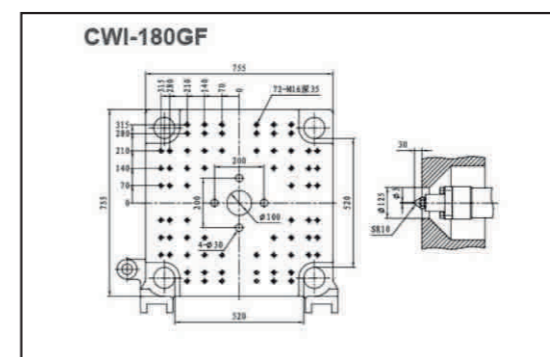
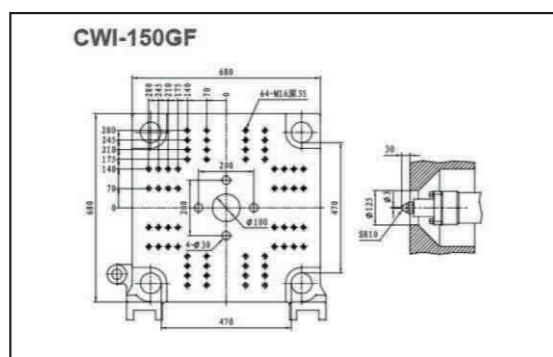
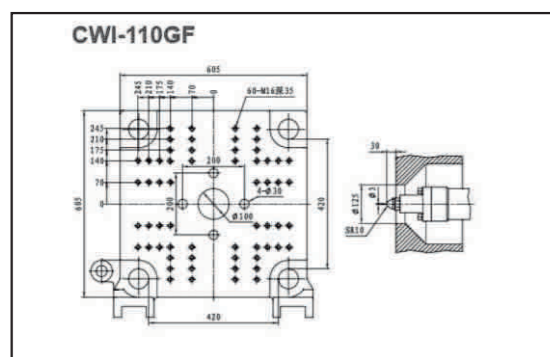
GF快速系列

机型		CWI-110GF			CWI-150GF					
合模装置	锁模力	Kn	Clamping Force	1100			1500			
	拉杆间距	mm	Space Between Tie-bars	420×420			470×470			
	开模最大开距	mm	Clamping Stroke	400			450			
	最大模厚	mm	Mould Thickness Max	450			520			
	最小模厚	mm	Mould Thickness Min	150			170			
	模板尺寸	mm	Size of Platen	605×605			680×680			
	顶出长度	mm	Ejector Stroke	110			140			
	顶出力	Kn	Ejector Force	38			53			
	顶针数		Ejector Quantily	5			5			
注射装置	射胶装置		Injection Unit	310I			310I		420I	
	螺杆直径	mm	Screw Diameter	28	32	35	32	35	35	40
	螺杆长径比		Screw L/D ratio	23	23	21	23	21	24	21
	理论射胶容积	cm ³	Shot Size	89	117	140	117	140	163	214
	注射重量	(PS) g	Shot Weight	82	108	129	108	129	150	196
		oz		2.9	3.8	4.6	3.8	4.6	5.3	6.9
	注塑压力	Mpa	Injection Pressure	319	244	204	244	204	256	196
	注射速度	mm/s	Injection Speed	190			239		191	
	注塑速率	cm ³ /s	Injection Rate	117	153	183	192	230	230	300
	螺杆最大转速	rpm	Screw Speed	400			400		400	
其他	油泵电机功率	Kw	Motor Power	24			34			
	油泵排量	L/min		138			176			
	电热功率	Kw	Heater Power	7.11			7.11		8.91	
	机器净重	ton	Machine Weight	4.2			5.2			
	机器尺寸(长×宽×高)	mm	Machine Dimension	4255×1430×1690			5095×1500×1745			



GF快速系列

机型		CWI-180GF				CWI-220GF					
合模装置	锁模力	Kn	Clamping Force	1800				2200			
	拉杆间距	mm	Space Between Tie-bars	520×520				570×570			
	开模最大开距	mm	Clamping Stroke	500				550			
	最大模厚	mm	Mould Thickness Max	550				600			
	最小模厚	mm	Mould Thickness Min	200				220			
	模板尺寸	mm	Size of Platen	755×755				830×830			
	顶出长度	mm	Ejector Stroke	140				170			
	顶出力	Kn	Ejector Force	53				80			
	顶针数		Ejector Quantily	5				9			
注射装置	射胶装置		Injection Unit	420I		650I		650I		860I	
	螺杆直径	mm	Screw Diameter	35	40	40	45	40	45	45	50
	螺杆长径比		Screw L/D ratio	24	21	24	21	24	21	23	21
	理论射胶容积	cm ³	Shot Size	163	214	251	318	251	318	358	442
	注射重量	(PS) g	Shot Weight	150	196	231	293	231	292	329	406
		oz		5.3	6.9	8.2	10.3	8.2	10.3	11.6	14.3
	注塑压力	Mpa	Injection Pressure	256	196	256	202	256	202	256	207
	注射速度	mm/s	Injection Speed	238		182		228		180	
	注塑速率	cm ³ /s	Injection Rate	229	229	229	290	286	363	286	354
	螺杆最大转速	rpm	Screw Speed	400		400		400		350	
其他	油泵电机功率	Kw	Motor Power	36				48			
	油泵排量	L/min		220				275			
	电热功率	Kw	Heater Power	8.9		10.9		10.9		13	
	机器净重	ton	Machine Weight	6.5				7.5			
	机器尺寸(长×宽×高)	mm	Machine Dimension	5455×1620×1820				5830×1640×1870			





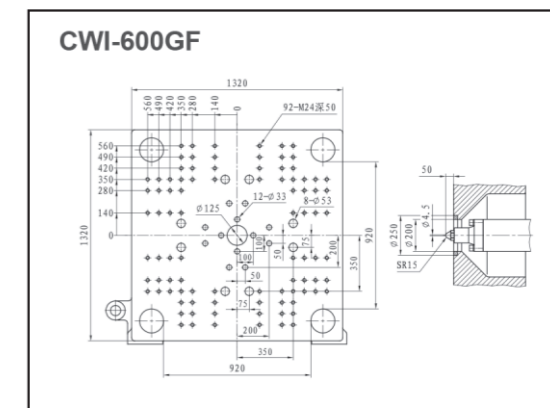
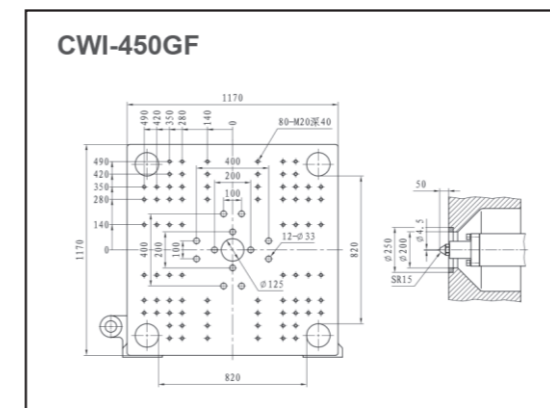
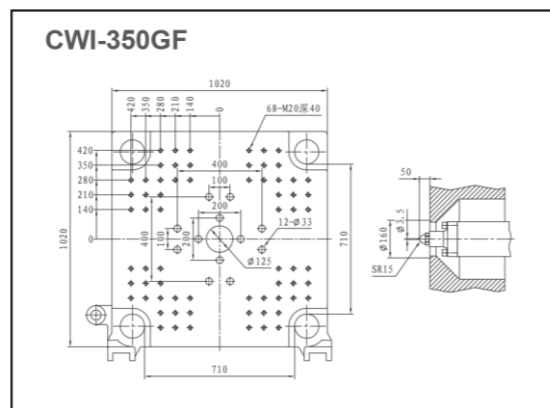
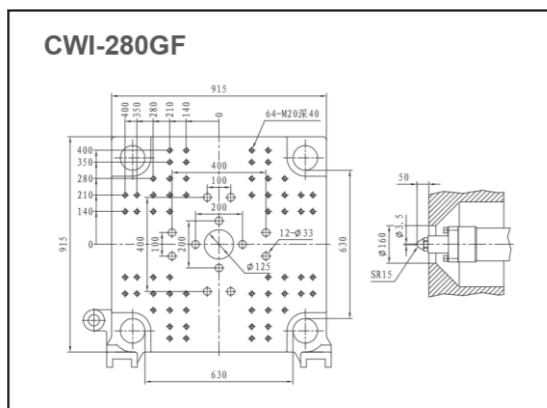
GF快速系列

机型		CWI-280GF				CWI-350GF						
合模装置	锁模力	Kn	Clamping Force		2800		3500					
	拉杆间距	mm	Space Between Tie-bars		630×630		710×710					
	开模最大开距	mm	Clamping Stroke		600		680					
	最大模厚	mm	Mould Thickness Max		650		720					
	最小模厚	mm	Mould Thickness Min		240		260					
	模板尺寸	mm	Size of Platen		915×915		1020×1020					
	顶出长度	mm	Ejector Stroke		170		200					
	顶出力	Kn	Ejector Force		80		80					
	顶针数		Ejector Quantily		13		13					
射胶装置		Injection Unit		860I		1100I		1100I		1700I		
螺杆直径	mm	Screw Diameter		45	50	50	55	50	55	60	65	70
螺杆长径比		Screw L/D ratio		23.3	21	23.1	21	23.6	21	22.8	21	19.5
理论射胶容积	cm ³	Shot Size		358	442	487	589	487	589	820	962	1115
注射重量	(PS) g	Shot Weight		329	406	448	542	448	542	754	885	1026
	oz			11.6	14.3	15.8	19.1	15.8	19.1	26.6	31.2	36.2
注塑压力	Mpa	Injection Pressure		256	207	231	191	231	191	215	183	158
注射速度	mm/s	Injection Speed		231		207		259		193		
注塑速率	cm ³ /s	Injection Rate		367	453	406	492	508	614	545	640	742
螺杆最大转速	rpm	Screw Speed		400		350		350		300		
油泵电机功率	Kw	Motor Power		34+34				34+36				
油泵排量	L/min			352				440				
电热功率	Kw	Heater Power		13	15.9		15.9		22.4			
机器净重	ton	Machine Weight		11.8				13				
机器尺寸(长×宽×高)	mm	Machine Dimension		6375×1680×2250				6705×1920×2350				



GF快速系列

机型		CWI-450GF						CWI-600GF							
合模装置	锁模力	Kn	Clamping Force		4500			6000							
	拉杆间距	mm	Space Between Tie-bars		820×820			920×920							
	开模最大开距	mm	Clamping Stroke		790			900							
	最大模厚	mm	Mould Thickness Max		800			900							
	最小模厚	mm	Mould Thickness Min		300			350							
	模板尺寸	mm	Size of Platen		1170×1170			1320×1320							
	顶出长度	mm	Ejector Stroke		220			250							
	顶出力	Kn	Ejector Force		113			151							
	顶针数		Ejector Quantily		13			21							
射胶装置		Injection Unit		1700I			2800I			2800I			4000I		
螺杆直径	mm	Screw Diameter		60	65	70	70	75	80	70	75	80	80	85	90
螺杆长径比		Screw L/D ratio		22.8	21	19.5	22.3	21	19.8	22.3	21	19.8	22.3	21	19.8
理论射胶容积	cm ³	Shot Size		820	962	1115	1385	1590	1809	1385	1590	1809	2060	2325	2607
注射重量	(PS) g	Shot Weight		754	885	1026	1274	1462	1664	1274	1462	1664	1895	2139	2398
	oz			26.6	31.2	36.2	44.9	51.6	58.7	44.9	51.6	58.7	66.8	75.5	84.6
注塑压力	Mpa	Injection Pressure		215	183	158	204	178	156	204	178	156	196	174	155
注射速度	mm/s	Injection Speed		217			168			187			149		
注塑速率	cm ³ /s	Injection Rate		614	720	835	647	743	845	508	825	939	748	845	947
螺杆最大转速	rpm	Screw Speed		300			250			250			200		
油泵电机功率	Kw	Motor Power		36+48						48+48					
油泵排量	L/min			495						550					
电热功率	Kw	Heater Power		22.4			30.2			30.2			43.9		
机器净重	ton	Machine Weight		20						32					
机器尺寸(长×宽×高)	mm	Machine Dimension		7960×2100×2460						10000×2320×2470					





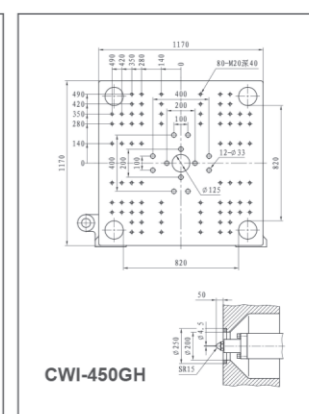
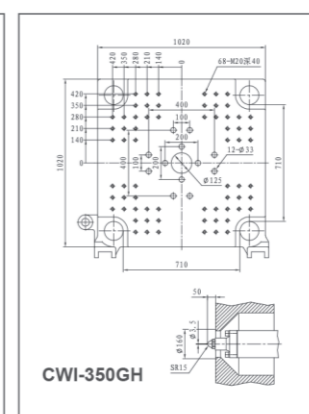
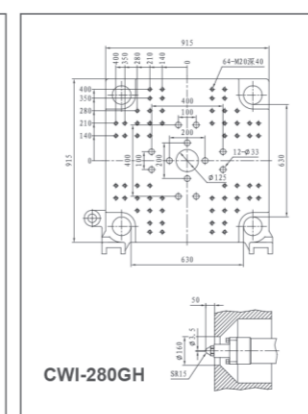
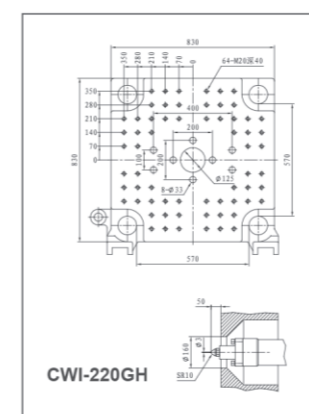
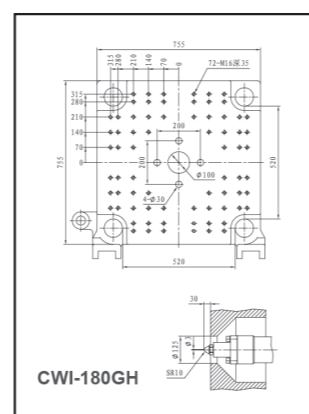
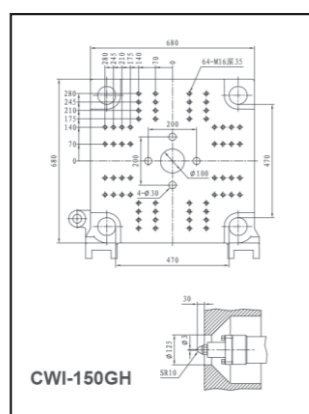
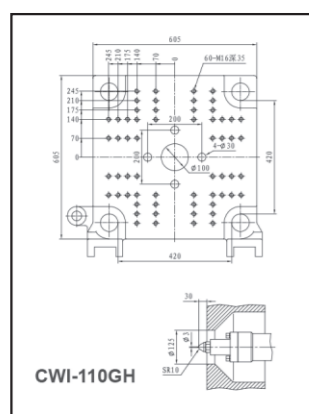
GH电液混合动力系列

机型		CWI-110GH	CWI-150GH	CWI-180GH								
合模装置	锁模力	Kn	Clamping Force	1100	1500	1800						
	拉杆间距	mm	Space Between Tie-bars	420×420	470×470	520×520						
	开模最大开距	mm	Clamping Stroke	360	420	460						
	最大模厚	mm	Mould Thickness Max	450	520	550						
	最小模厚	mm	Mould Thickness Min	150	170	200						
	模板尺寸	mm	Size of Platen	605×605	680×680	755×755						
	顶出长度	mm	Ejector Stroke	110	140	140						
	顶出力	Kn	Ejector Force	40	50	50						
顶针数		Ejector Quantily	5	5	5							
注射装置	射胶装置	Injection Unit	310IH			310IH			650IH			
	螺杆直径	mm	Screw Diameter	28	32	35	28	32	35	35	40	45
	螺杆长径比		Screw L/D ratio	23.4	23	21	23.4	23	21	24.3	23.7	21
	理论射胶容积	cm ³	Shot Size	89	117	140	89	117	140	173	226	286
	注射重量	(PS) g	Shot Weight	81	108	129	81	108	129	157	206	260
		oz		2.9	3.8	4.6	2.9	3.8	4.6	5.6	7.3	9.2
	注塑压力	Mpa	Injection Pressure	275	210	186	275	210	186	270	207	158
	注射速度	mm/s	Injection Speed	300			300			300		
	注塑速率	cm ³ /s	Injection Rate	185	241	288	185	241	288	287	376	477
	螺杆最大转速	rpm	Screw Speed	300			300			300		
其他	油泵电机功率	Kw	Motor Power	12/30			22/30			22/42		
	油泵排量	L/min		84			84			139		
	电热功率	Kw	Heater Power	7.11			7.11			10.87		
	机器净重	ton	Machine Weight	4.2			5.2			6.5		
	机器尺寸(长×宽×高)	mm	Machine Dimension	4255×1430×1690			5095×1500×1745			5455×1620×1820		



GH电液混合动力系列

机型		CWI-220GH	CWI-280GH	CWI-350GH	CWI-450GH							
合模装置	锁模力	Kn	Clamping Force	2200	2800	3500	4500					
	拉杆间距	mm	Space Between Tie-bars	570×570	630×630	710×710	820×820					
	开模最大开距	mm	Clamping Stroke	500	550	610	790					
	最大模厚	mm	Mould Thickness Max	600	650	720	800					
	最小模厚	mm	Mould Thickness Min	220	240	260	300					
	模板尺寸	mm	Size of Platen	830×830	915×915	1020×1020	1170×1170					
	顶出长度	mm	Ejector Stroke	170	170	200	220					
	顶出力	Kn	Ejector Force	76	76	76	113					
顶针数		Ejector Quantily	9	13	13	13						
注射装置	射胶装置	Injection Unit	650IH			860IH			860IH			
	螺杆直径	mm	Screw Diameter	35	40	45	45	50	55	45	50	55
	螺杆长径比		Screw L/D ratio	24.3	23.7	21	23.3	21	18.9	23.3	21	18.9
	理论射胶容积	cm ³	Shot Size	173	226	286	349	431	518	349	431	518
	注射重量	(PS) g	Shot Weight	157	206	260	318	392	471	318	392	471
		oz		5.6	7.3	9.2	11.2	13.8	16.6	11.2	13.8	16.6
	注塑压力	Mpa	Injection Pressure	270	207	158	239	194	157	239	194	157
	注射速度	mm/s	Injection Speed	300			300			300		
	注塑速率	cm ³ /s	Injection Rate	287	376	477	477	588	712	477	588	712
	螺杆最大转速	rpm	Screw Speed	300			300			300		
其他	油泵电机功率	Kw	Motor Power	22/42			30/75			30/75		
	油泵排量	L/min		139			220			220		
	电热功率	Kw	Heater Power	10.87			13			13		
	机器净重	ton	Machine Weight	7.5			11.8			13		
	机器尺寸(长×宽×高)	mm	Machine Dimension	5830×1640×1870			6375×1680×2075			6750×1920×2350		

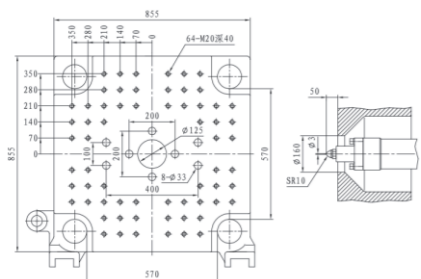




GK高速薄壁专用机系列

机型		CWI-230GK		
合模装置	锁模力	Kn	Clamping Force	2300
	拉杆间距	mm	Space Between Tie-bars	570×570
	开模最大开距	mm	Clamping Stroke	550
	最大模厚	mm	Mould Thickness Max	600
	最小模厚	mm	Mould Thickness Min	220
	模板尺寸	mm	Size of Platen	855×855
	顶出长度	mm	Ejector Stroke	170
	顶出力	Kn	Ejector Force	80
	顶针数		Ejector Quantily	9
注射装置	射胶装置		Injection Unit	650I
	螺杆直径	mm	Screw Diameter	45 50
	螺杆长径比		Screw L/D ratio	21 18.9
	理论射胶容积	cm ³	Shot Size	318 393
	注射重量	(PS) g	Shot Weight	292 361
		oz		10.3 12.7
	注塑压力	Mpa	Injection Pressure	202 164
	注射速度	mm/s	Injection Speed	299
	注塑速率	cm ³ /s	Injection Rate	475 586
	塑化能力	g/s	Plasticising Capacity	6.8 8.4
螺杆最大转速	rpm	Screw Speed	400	
其他	油泵电机功率	Kw	Motor Power	50+25
	油泵排量	L/min		360
	电热功率	Kw	Heater Power	10.9
	机器净重	ton	Machine Weight	8
	机器尺寸(长×宽×高)	mm	Machine Dimension	5800×1700×1870

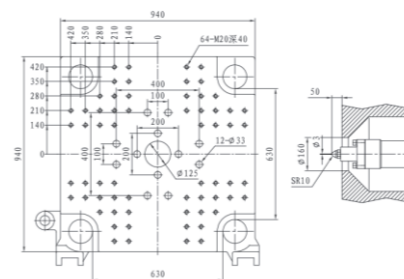
CWI-230GK



GK高速薄壁专用机系列

机型		CWI-290GK		CWI-360GK	
合模装置	锁模力	Kn	Clamping Force	2900	3600
	拉杆间距	mm	Space Between Tie-bars	630×630	740×740
	开模最大开距	mm	Clamping Stroke	600	680
	最大模厚	mm	Mould Thickness Max	650	720
	最小模厚	mm	Mould Thickness Min	240	260
	模板尺寸	mm	Size of Platen	940×940	1090×1090
	顶出长度	mm	Ejector Stroke	170	200
	顶出力	Kn	Ejector Force	80	80
	顶针数		Ejector Quantily	13	13
注射装置	射胶装置		Injection Unit	860I	1100I
	螺杆直径	mm	Screw Diameter	50 55 55 60	
	螺杆长径比		Screw L/D ratio	21 19.1 21 19.3	
	理论射胶容积	cm ³	Shot Size	442 534 589 701	
	注射重量	(PS) g	Shot Weight	406 492 542 645	
		oz		14.3 17.3 19.1 22.7	
	注塑压力	Mpa	Injection Pressure	207 171 191 160	
	注射速度	mm/s	Injection Speed	295	294
	注塑速率	cm ³ /s	Injection Rate	579 700 698 831	
	塑化能力	g/s	Plasticising Capacity	6.8 8.4 6.8 8.4	
螺杆最大转速	rpm	Screw Speed	350	300	
其他	油泵电机功率	Kw	Motor Power	50+50	50+50
	油泵排量	L/min		450	500
	电热功率	Kw	Heater Power	13	15.9
	机器净重	ton	Machine Weight	12	14
	机器尺寸(长×宽×高)	mm	Machine Dimension	6400×1850×2075	7100×2100×2175

CWI-290GK



CWI-360GK

